

PSM-DC 1006

Having constant real time information on your power equipment's operational status is crucial to you and your business. Gamatronic's unique PSM software allows you to manage and control single power supply systems both locally and from a remote location. Any fault detected by the controller immediately initiates an outburst. This outburst communicates the data to either the on site PSM software via a local serial connection or to the PSM software at a remote location by automatic dialing via a modem.

Analogue and digital real time parameter displays

Example of a PSM data screen representing Power Supply Controller 1006 (Real time mode)



LED indicator light status for controller 1006

PSM Software, the perfect solution for the on site technician who does not require a TCP/IP setup
Compatible with Power System 2012, Power System 2008 and Power System 1006

PSM Features

- Remote Control and Management of the power equipment, including configuration of system's parameters (with modem connection)
- Assorted Reports provide up to date information on the status of the power equipment including reports for system modifications, alarm log, battery status, power equipment characteristics and more
- Customization - Possibility for user defined characteristics and values to suit individual client requirements



Set general operating parameters screen

Individual PSM subwindows for defining and displaying the system characteristics.

The user may redefine the system's characteristic values and error ranges according to his requirements.

ГЕРМАНИЯ

Blohmstrasse 16/20
21079 Hamburg
Tel.: +49 (0)40 767335-0
Fax: +49 (0)40 767335-15
Email: hamburg@mas.de

РОССИЯ

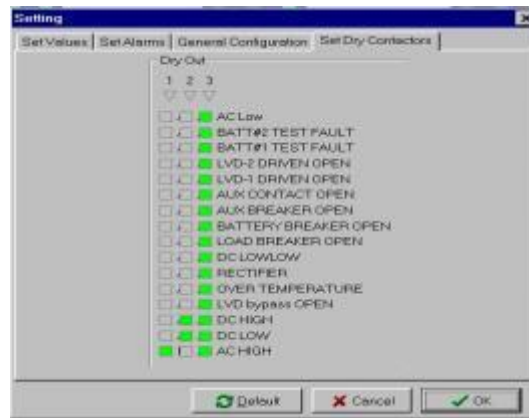
Москва, 107258
ул. 1-я Бухвостова, 12/11
Тел.: +7 (095) 737 8063
Факс: +7 (095) 737 8062
Email: moscow@mas.de

РОССИЯ

Санкт-Петербург, 199406
Мальи проспект В.О. 63
Тел.: +7 (812) 325 6810
Факс: +7 (812) 355 7626
eMail: petersburg@mas.de

УКРАИНА

Киев, 01033
ул. Сакаганского, 69
Тел.: +380 (44) 248 7591
Факс: +380 (44) 220 6076
eMail: kiev@mas.de



Set dry contactors screen

Software Highlights

- Events And Statistic Logs presented graphically showing the real time status of all the individual and total voltages and currents in the system,
- History Log - visual observation of historical system data; may be configured as necessary
- One Software efficiently supports one system
- User Hierarchy for a high level of security - two user levels



Set alarm activation parameters screen

Technical Information

- Communication for remote access via modem connection
- PSM communicates through a serial based local connection
- Installation possible under all Microsoft environments

For Local Connection Setup you need:

- PSM Software
- Serial Cable
- Customer PC

For Remote Location Setup you need:

- PSM Software
- Serial Cable
- Customer PC
- Modem
- Phone Line

ГЕРМАНИЯ

Blohmstrasse 16/20
21079 Hamburg
Tel.: +49 (0)40 767335-0
Fax: +49 (0)40 767335-15
Email: hamburg@mas.de

РОССИЯ

Москва, 107258
ул. 1-я Бухвостова, 12/11
Тел.: +7 (095) 737 8063
Факс: +7 (095) 737 8062
Email: moscow@mas.de

РОССИЯ

Санкт-Петербург, 199406
Мальий проспект В.О. 63
Тел.: +7 (812) 325 6810
Факс: +7 (812) 355 7626
eMail: petersburg@mas.de

УКРАИНА

Киев, 01033
ул. Сакаганского, 69
Тел.: +380 (44) 248 7591
Факс: +380 (44) 220 6076
eMail: kiev@mas.de